

# Uniform and Appearance Policy

## Ormeau Woods State High School



### Rationale

Our Uniform and Appearance Policy supports staff and students by fostering a sense of belonging and school pride, enhancing mutual respect among students by minimising visible evidence of economic or social differences, identifying students and non-students at school, and eliminating distraction of competition in dress and fashion at school.

### Relevant Legislation and Policy

This policy has been developed in accordance with the Education (General Provisions) Act 2006 (Sections 360-363) ["The Act"], the Department of Education and Training procedure SMS-PR-022: Student Dress Code, and Sun safety in state school's procedure in relation to implementing student dress codes in Queensland State Schools. It explains and documents the standards of acceptable dress at Ormeau Woods State High School. A copy of the Uniform and Appearance Policy is available to, and agreed by, parents and students at the time of enrolment as part of the Enrolment Agreement.

The Ormeau Woods State High School Uniform and Appearance Policy is endorsed by the school Parents and Citizens Association (P & C).

### Expectations of Ormeau Woods SHS Students

In accordance with this Uniform and Appearance Policy, students are to wear the formal uniform or sports uniform when attending school, whilst travelling to and from school and when representing the school at out of school events. Students are to wear the formal uniform for all formal occasions such as excursions, public appearances, awards nights, school photos or other school functions as specified.

This Uniform and Appearance Policy was approved and endorsed by:

Dan Murtas  
Principal  
Ormeau Woods State High School

Neil Keen  
President  
Parents and Citizens Association

# Uniform and Appearance Policy

## Ormeau Woods State High School



Ormeau Woods State High School and the Parents and Citizens Association endorse the following uniform and appearance expectations of students.

### Junior Formal Uniform (7-9)



- Sky blue formal school shirt (with school logo)
- Plain ink blue skirt – minimum length mid-thigh to maximum length upper calf
- Plain ink blue dress shorts – minimum length mid- thigh to maximum length upper calf
- Plain ink blue skort – minimum length mid-thigh to maximum length upper calf
- Plain ink blue long dress pants

### Senior Formal Uniform (10-12)



- White formal school shirt (with school logo)
- Plain ink blue skirt – minimum length mid-thigh to maximum length upper calf
- Plain ink blue dress shorts – minimum length mid- thigh to maximum length upper calf
- Plain ink blue skort – minimum length mid-thigh to maximum length upper calf
- Plain ink blue long dress pants
- School tie or scarf (optional)

### Sport Uniform (All Years)



- Sports school polo shirt (with school logo)
- Plain ink blue sports shorts – minimum length mid-thigh to maximum length upper calf

# Uniform and Appearance Policy

## Ormeau Woods State High School



### Winter Uniform (All Years)



- School jumper or jacket (with school logo)
- Plain ink blue long pants
- Plain ink blue or black stockings
- School jersey (for Year 12 students only)

Please note, work wear pants, cargo pants or shorts, beanies, balaclavas, knit caps with ear flaps or other similar headwear are not permitted.

### Undershirts

- Undershirts, for example t-shirts or singlets, must not be visible outside or through the school uniform.

### Footwear – Socks

- Plain white socks, visible above the shoe line.

#### Approved Appropriate Socks



# Uniform and Appearance Policy

## Ormeau Woods State High School



### Footwear – Shoes

- Black leather lace up shoes or black leather joggers that are below the ankle
- Black shoelaces only

Please note:

- No ankle boots, work boots, Doc Martins, ballet flats or other shoes which do not cover the upper part of the foot are permitted.
- Students are permitted to change into approved footwear to access the curriculum. This includes; sports shoes for sport/HMS lessons, steel capped work boots in Technology lessons or dance shoes for dance lessons.

### Approved Appropriate Shoes

	<p>Leather Jogger</p> 	<p>Leather Jogger</p> 	<p>Leather Lace Up</p> 	<p>Leather Jogger</p> 
---	---	---	---	---

### Jewellery

#### Permitted Jewellery

- One (1) watch
- Two (2) flat rings (maximum 5mm width)
- Two (2) pairs of plain studs or sleepers worn in the ears (studs maximum 5mm in diameter, sleepers maximum 10mm in diameter)
- Spacers worn in the ears are to be clear only, flat and solid, maximum 10mm in diameter.
- One (1) clear, plastic nose stud (retainer) (maximum 1mm diameter)

#### NOT Permitted Jewellery

- Dangly earrings
- Bracelets \*
- Necklaces \*\*
- Anklets
- All other facial piercings and adornments including but not limited to metal nose studs, rings, septum, lip, chin, eyebrow and tongue.

Students will be required to remove non-compliant items or items that impinge upon WH&S regulations. Students with non-compliant facial piercings will be referred to the Uniform Room where they will be directed to remove the item. If a student refuses or repeatedly breaches the policy, the issue will then be viewed as defiance as outlined in the Student Code of Conduct.

\*Medical bracelets permitted if documentation supplied.

\*\*Students wishing to wear necklaces of cultural or religious significance are required to seek approval through the school Principal and parents/caregivers. Approved necklaces must be long enough to be concealed under the shirt.

# Uniform and Appearance Policy

## Ormeau Woods State High School



### Make-Up and Nails

#### Permitted Make-up and Nails

- Discreet sun factor make up may be worn as part of the Sun Safety Guidelines.
- Discreet natural looking eye lash extensions are permitted.
- Light coverage of mascara.
- Clear nail polish and white French tips are permitted. Acrylic nails must be of a clear colour and appropriate and safe length



#### NOT Permitted Make-up and Nails

- Eyeliner, eye shadow, lipstick/lip-gloss and other 'heavy' make-up are not permitted.
- No coloured nail polish



### Tattoos

The school acknowledges that tattoos are part of some religious and cultural beliefs and practices. Students who have a tattoo are required to have it covered whilst at school or attending school events.

### Hair

#### Permitted Hair

- Neat, clean, tidy, well-maintained with natural tone/ colouring
- Hair ribbons, bands, scrunchies and claw clips of school colours may be worn.

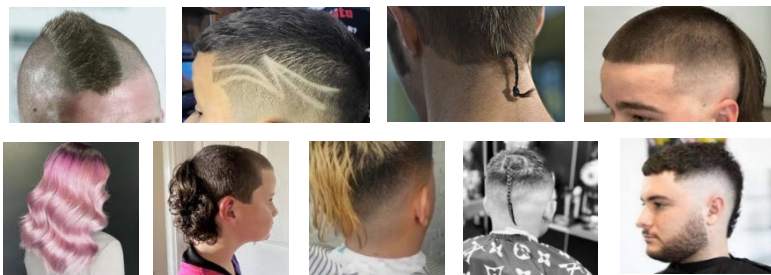
Possible examples of what is permitted:



#### NOT Permitted Hair

- Bandanas, beanies, brightly coloured or patterned headwear, tiaras, feathers and beads
- Mohawks, tracks, razor patterns, rat's tails, mullets, skullcuts, dreadlocks, and or combinations of extreme hairstyle lengths/colours

Possible examples of what is NOT permitted:



\*Hair must be tied back or in a hair net for all practical lessons and activities as required by Workplace Health and Safety requirements or teacher direction.

## Sun Safety

In accordance with the *Sun safety in state schools procedure*:

- Students are required to wear a sun safe hat when outdoors during the school day. This includes during lunch breaks and curriculum time.
- Sun safe hats (i.e. cap or broad brimmed hat) must be free from offensive language, offensive symbols and offensive logos.
- Students who are in the sun but not participating in practical activities during lunch breaks will be directed to utilise shaded areas where possible.
- Students will be provided access to sunscreen during lunch breaks and curriculum time.



## Out of Uniform Procedure

Not wearing the uniform correctly is a breach of the Ormeau Woods State High School Uniform and Appearance Policy.

- Prior to the commencement of the school day any student out of uniform is required to report to the Uniform Room. If the student has a note from their parent/caregiver they *may* be temporarily excused from complying with the Uniform and Appearance Policy.
- In most circumstances, students will be temporarily loaned appropriate items to allow them to comply with the Uniform and Appearance Policy.

## Consequences of not wearing correct uniform

Students who fail to adhere to the Ormeau Woods State High School Uniform and Appearance Policy, may be issued with consequences aligned to the Ormeau Woods State High School Student Code of Conduct.

## Exemptions

Exemptions to the Uniform and Appearance Policy, granted on a case-by case basis by the school Principal, allow equitable access to learning for students with physical impairments, or cultural or religious grounds.